

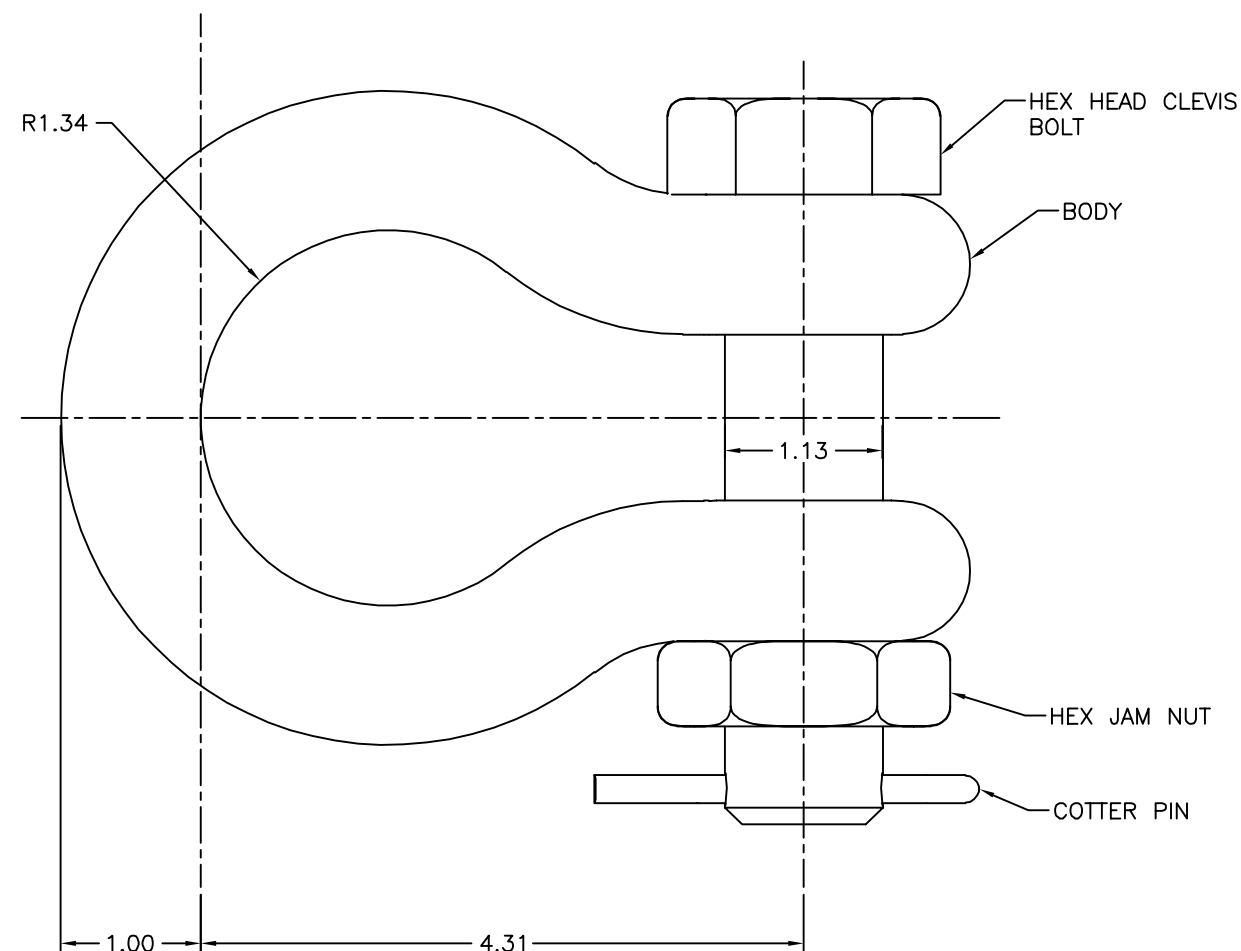
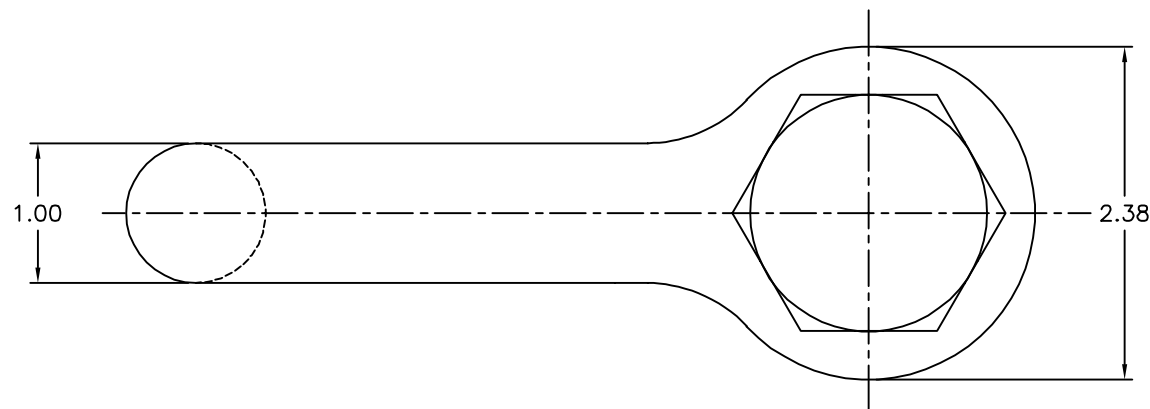
4

3



2

1



NOTES:

1. MATERIAL: BODY – GALV. FORGED STEEL
HUMPBACK COTTER PIN – STAINLESS STEEL
HEX HEAD CLEVIS BOLT & HEX JAM NUT – GALV. STEEL
2. HOT DIP GALVANIZED PER ASTM A153.
3. DIMENSIONS IN INCHES.
4. ULTIMATE STRENGTH: 100,000 LBS.
5. WEIGHT: 6.77 LBS. APPROX.

EC #	DATE	CHG BY	LEB CKD BY	PTB APPD BY
--	--	--	LEB	PTB
DESC OF DWG: DRAWING CREATED IN AUTOCAD				
-- PRELIMINARY ONLY --				
REASON (S) FOR CHANGE: --				
DISPOSITION OF MAT'L: --				

THIRD ANGLE PROJECTION

CONFIDENTIAL: THIS DRAWING AND ITS CONTENTS ARE CONFIDENTIAL AND THE EXCLUSIVE PROPERTY OF HUBBELL POWER SYSTEMS. NO PUBLICATION, DISTRIBUTION, OR COPIES MAY BE MADE WITHOUT THE WRITTEN CONSENT OF HUBBELL POWER SYSTEMS. HUBBELL POWER SYSTEMS UNPUBLISHED ALL RIGHTS RESERVED UNDER THE COPYRIGHT LAWS.



TITLE			
ANCHOR SHACKLE 100K LBS. ULT.			
CATALOG NUMBER: 946693001			
SIZE	DWG NO.	PART / ASSY NO.	REV
B	CUTSHEET	--	A
SCALE: NS	DRN BY: SV	DATE: 04/16/20	SHEET 1 OF 1

4

3



2

UNCONTROLLED COPY WHEN PRINTED 1